

The top right corner of the slide features a decorative arrangement of overlapping triangles in various shades of blue, including dark blue, medium blue, and light blue.

CMC Food and Clothing Drive 2023



Who, What, Where, When

We will be collecting gently used clothes for

- **NW Children's Outreach (Infant -Teen clothing)**
- **Clackamas Service Center (Coats/hoodies)**

We will be collecting travel size hygiene items for **Clackamas Service Center**

We will be collecting food donations for the **Sunshine Division**

- We need at least 500 items of food

Where: CMC Commons.

- Clothing/hygiene donations go in the cardboard boxes and food donations go in the barrels

When: Nov 13-Jan 12

Weekly Themes

Nov 13-17 → soup and chili

Nov 27-Dec 1 → proteins/mac and cheese

Dec 4-8 → oatmeal

Dec 11-14 → snacks

Jan 2-5 → fruit

Jan 8-12 → hygiene

You can donate any food at any time you are not limited to donate what's being asked for in the weekly theme.

- 1 donated food item under \$3= 1 raffle ticket; Over \$3= 2 raffle tickets (Given through Advisor)
- Each week a raffle will be drawn and someone will win a prize. On the last week, a grand prize raffle will be drawn.

PRIZES from our generous donors

BLACK ROCK GIFT CARD

WINTERHAWKS TICKET (12/8/23)

AMAZON GIFT CARD

STANLEY WATER BOTTLE

BLAZERS TICKET (2/8/24)

AIRPODS (Grand Prize)



Food drive Soup and Chili week



Nov 13-17

Contribute to this week's food drive by donating canned soups or chili, and get a chance to win a BLACK ROCK GIFT CARD!!

1 donated food item under \$3 = 1 raffle ticket; Over \$3= 2 raffle tickets

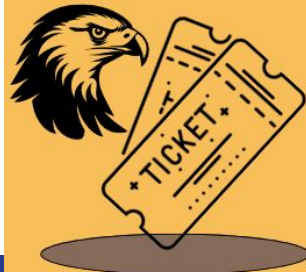
Mac & Cheese And Proteins



Sunshine Division



Nov 27 - Dec 1



The winning price is a
FREE ticket to the
Winter Hawks game!



Oatmeal Week

December 4th-8th

donations are appreciated!



SNACKS PLEASE!

DECEMBER 11-14!

Bring in snacks of all sorts for a chance at a

STANLEY WATER BOTTLE!



This year's fall service project has begun. Help us donate to the Clackamas Service Center this week by DONATING SNACKS!



PRIZES



How does that work??

Donating a food item worth 3\$ will
ENTER YOU IN THE **WEEKLY RAFFLE**
each subsequent 3\$ will
ADD AN ADDITIONAL TICKET



**THIS WEEK'S PRIZE:
STANLEY WATER BOTTLE**





Clackamas Middle College

FRUIT Week

2-5
JANUARY

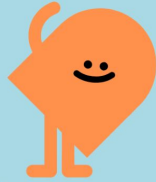
Win a Blazers Ticket

BRING ANY
SEALED OR
CANNED
FRUIT

Hygiene Product Drive

January 8-12

Help us collect essential
hygiene items (listed below)
ALL donations NEEDED going
to the clackamas service
center



Grand Prize
—◆◆—
Airpods



**ITEMS TO
DONATE:** Feminine
products,
Shampoo, Bar
soap, Tooth
paste/Tooth Brush,
Deodorant,
Conditioner, Hand
sanitizer, Razors,
Etc.
Your paragraph text